

Grasso RC 412 E

Specifications

Brand	Grasso
Type	RC 412 E
Refrigerant	NH 3 (ammonia)
kW at 0°C/+40°C	450,0
kW at -5°C/+40°C	383,7 (-6°C/+36°C)*
kW at -10°C/+40°C	431,5 (-10°C/+37,5°C)*
Electromotor Specs	Schorch KN7315S-BB01B-401
Unloaded Start	✓
Capacity Control	✓
On steel base frame	✓
Pressure safety switches	✓
Hp/Lp/Op	
Oil separator	✓
m3 / h	796,0
Remarks	Y.o.b. 2000
Remarks	*Capacity based on elektromotor 160 kW and 1450 RPM.
Package / Rack	✓
Sizes	1000x650x900 mm (LxWxH)
Stock	1



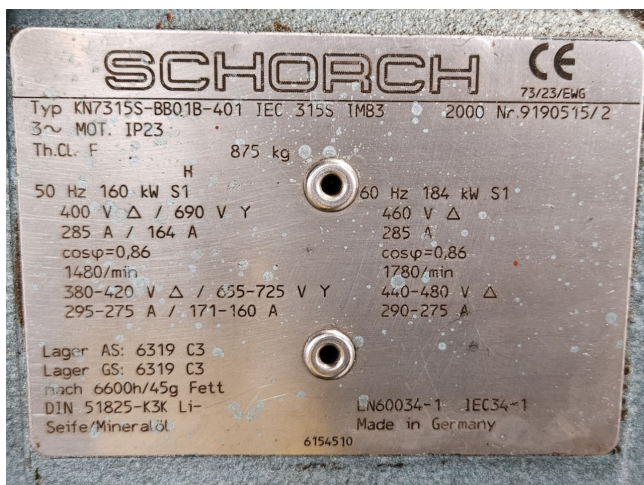
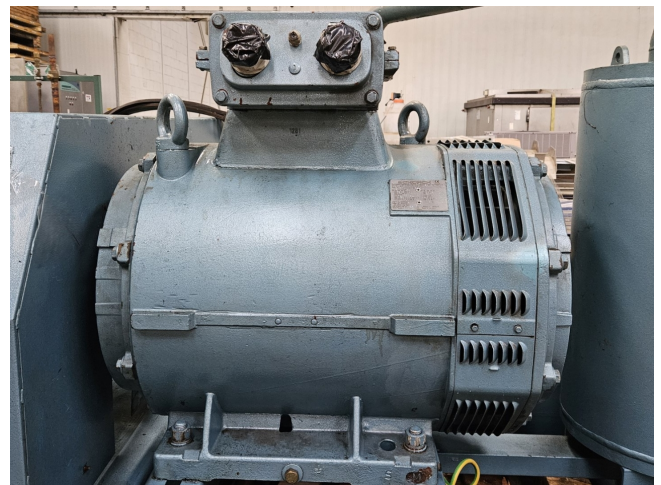
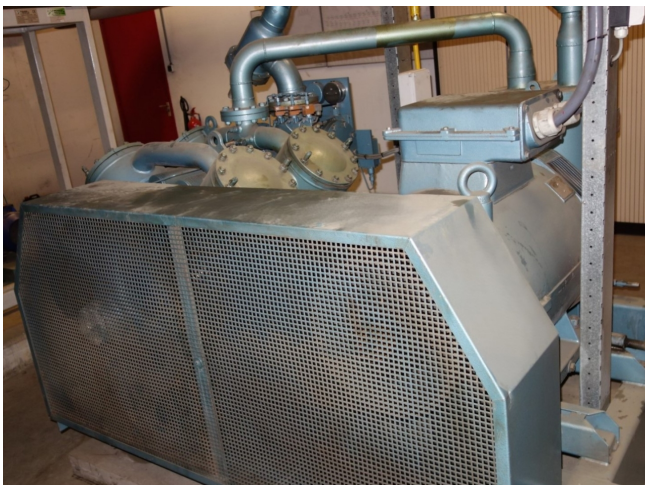
Description

Used Grasso RC 412 E

Used GEA Grasso RC 412E open-type reciprocating compressor unit on NH3 (ammonia). Complete with a Schorch KN7315S-BB01B-401 electro motor - 50/60 Hz - 160/184 kW - 1480/1780 RPM, GEA Grasso oil separator and pressure safety switches/gauges.

*Why choose for HOSBV? We're not only the largest used refrigeration specialist in Europe, but also, we deliver all equipment including an extensive test, warranty and industrial cleaning.

*Optional we can also perform a new paint job and arrange the logistics.



1.1.2 Twee compressor aggregaten, bestaand, ongewijzigd.

Zuigercompressor.

Fabrikaat	: Grasso.
Type	: RC 412e.
Koelcapaciteit	: 383,7 kW.
Opgenomen vermogen	: 85,1 kW.
Verdampingstemperatuur	: -5 °C.
Condensatiestemperatuur	: 36 °C.
Toerental	: 1.050 omw/min.
Capaciteitsregeling	: 25-50-75-100%.

Elektromotor.

Vermogen	: 160 kW.
Toerental	: 1.450 omw./min.
Fabrikaat	: Leroy Somer.
Inclusief:	

projectnr.	: 2006.0006
datum	: 14-9-2016
pagina	: 2/17

Instrumenten paneel.

- Zuig, pers en oliedrukmanometer.
- Hoge en lagedruk pressostaat.
- Oliedrukpressostaat.
- Persgastemperatuurbewaking.

Frame.

De compressor is met de elektromotor, de olie afscheider en toebehoren samengebouwd op een stalen frame. Het frame is gestraald en in kleur gespoten.